

SLM 100

Precision and Perfection





Realizer in Action

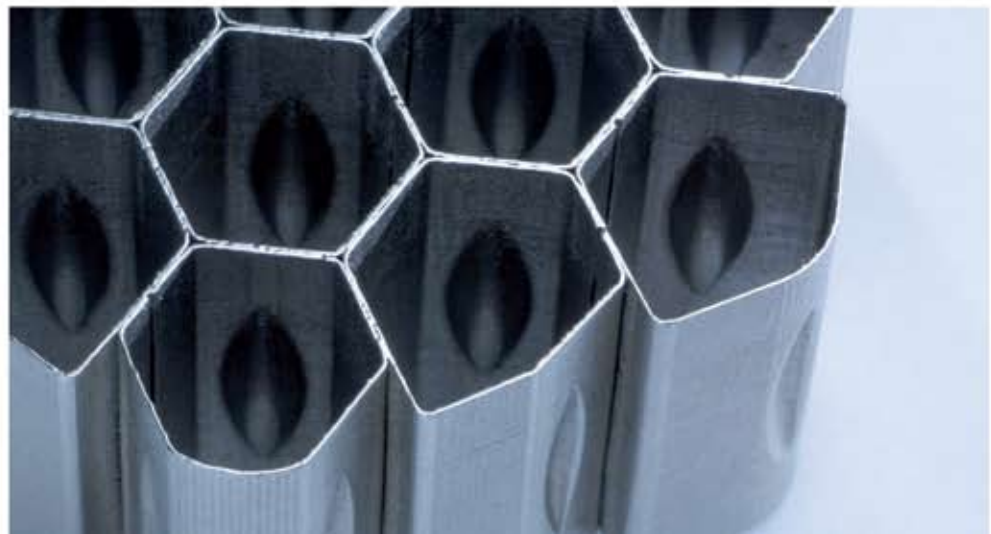
SLM 100

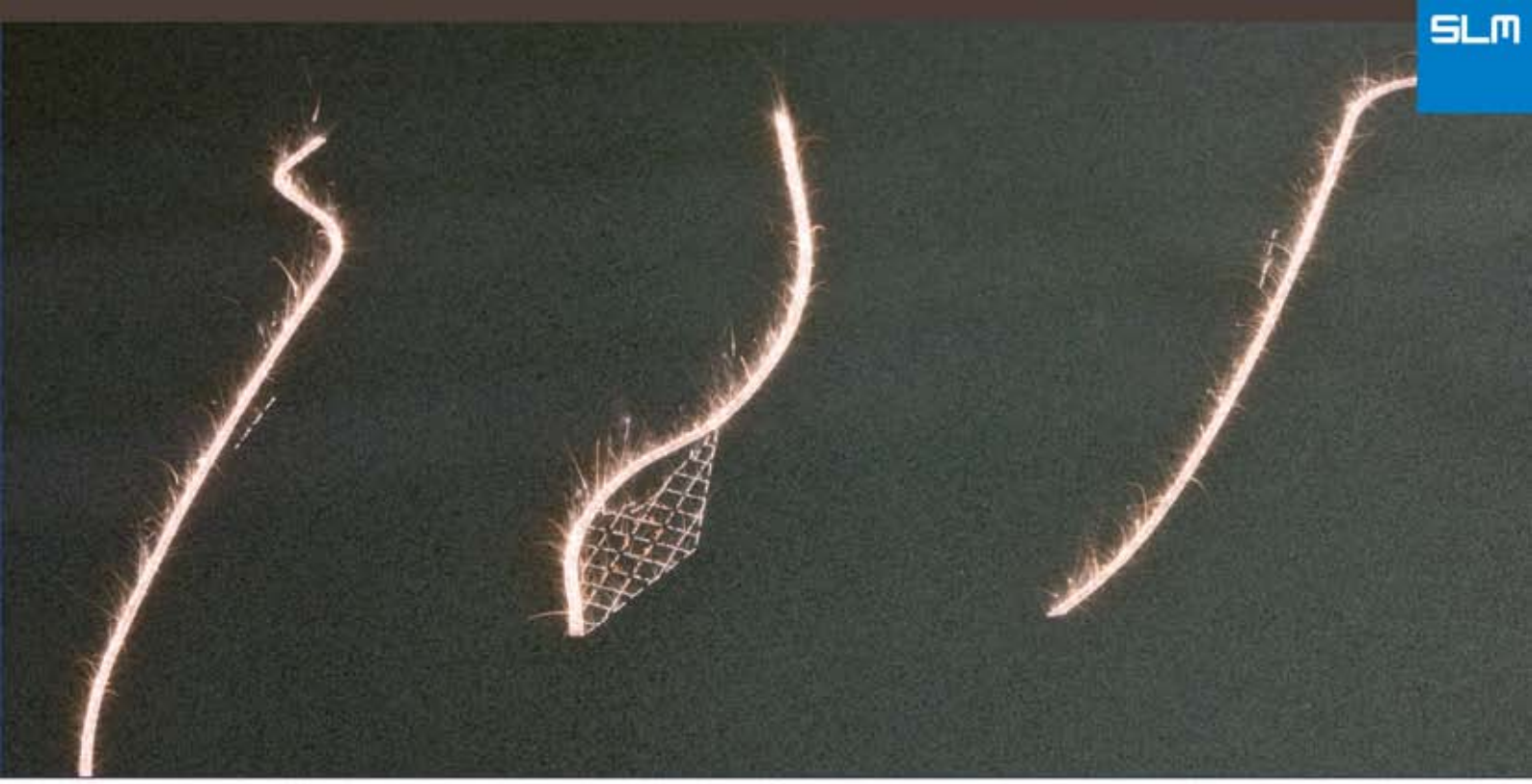
Precision and Perfection

The Realizer SLM 100 is designed specifically for the production of „smaller“ components, whereby high precision and surface quality are of utmost importance.

This machine has a 100 mm-high construction area with a square of 125x125 mm. This base area permits the use of optics to focus the diameter of the laser beam down to 20 μm . With the corresponding scan strategy, this machine can produce components with delicate structures, minimal wall thickness down to 60 μm , and high surface quality.

With its compact design and the ergonomically designed workstation, the Realizer SLM 100 is especially suited for use in laboratories or similar environments.





SLM 100 D

The ReaLizer SLM 100D is a good choice if space is limited and a separate workstation is available for data preparation. It was specifically designed for use in milling centres and dental laboratories.

This machine is controlled via an integrated 19" touch screen display with an alpha-numeric keypad.





SLM 100 specifications

Construction volume Platform 125 x 125 mm² Max. overall constr. height 100 mm

Layer thicknesses 20-100 µm

Laser type Fibre laser 20 to 200 W

Power supply 16A, 400V

Power input 1.5 kW

Argon consumption app. 35 l/h

Dimensions W1000 x D850 x H2100 mm,

Weight 500 kg

Software ReaLizer control software

Materials Tool steel H 13, titanium, titanium V4, aluminium, cobalt chrome, stainless steel 316 L, Inconel, Gold, ceramic materials under development others on request

REALIZER 

Hauptstraße 35,
33178 Borchen,
Germany
Tel. 49 (0) 5251 63232
Fax. 49 (0) 5251 63062
e-mail: info@realizer.com
www.realizer.com

Representation for Greece & Cyprus
NOVAPAX HELLAS

Alkiviadou 51st.
185 32 Piraeus, Greece
Tel. 0030 210 4112589
Fax. 0030 210 4137529
E-mail: info@novapax.gr
Website: www.novapax.gr